

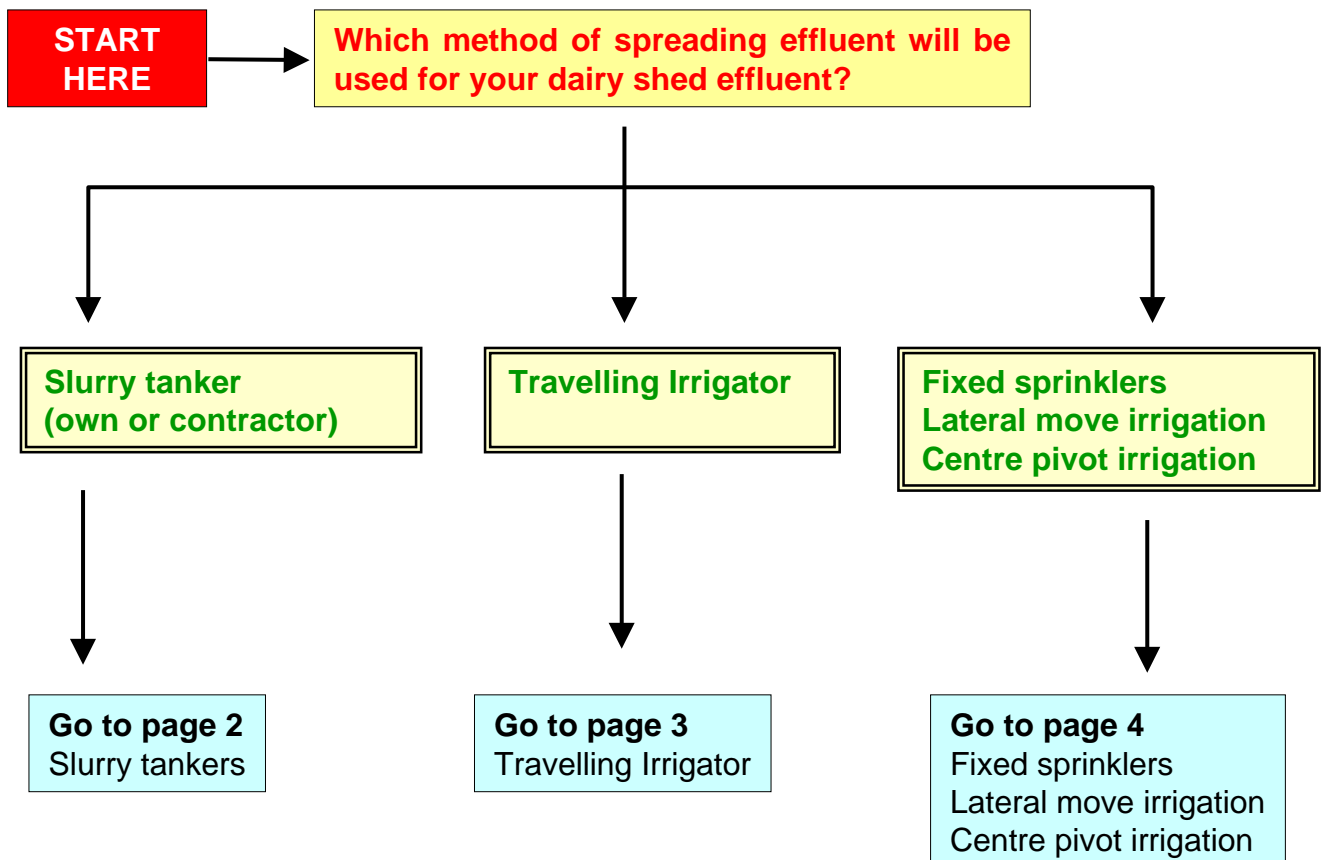
## FLOW CHART FOR CHOOSING YOUR SYSTEM

Management of dairy shed effluent is mandatory for all dairies in South Australia. Management involves the collection, treatment, and spreading of effluent. How the effluent is collected and treated depends largely on how it is to be spread, as well as physical limitations of the site.

This decision aid is designed to help you choose the type of effluent collection and handling systems which are suitable for the spreading method you wish to use for your dairy shed effluent.

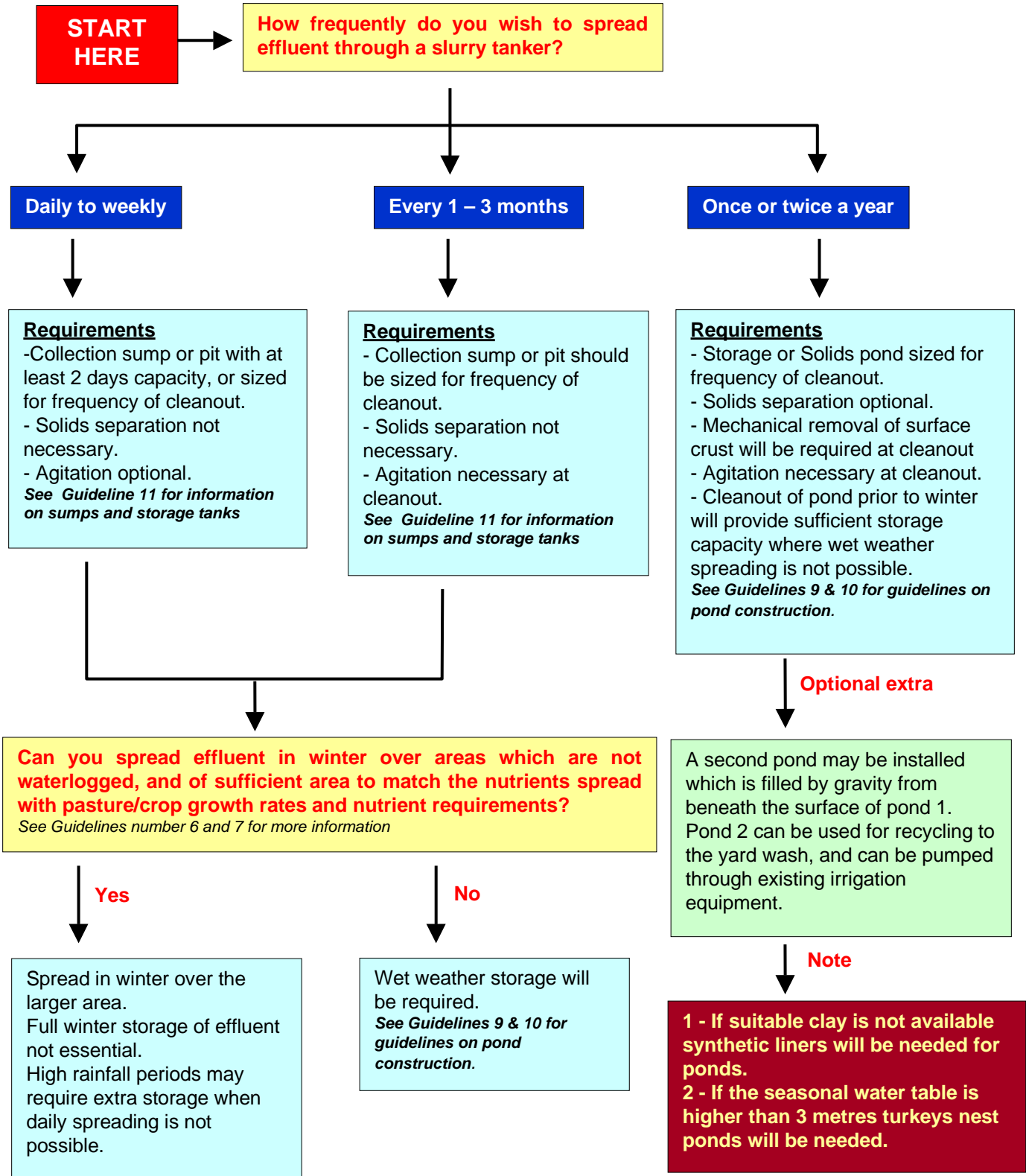
To start, choose the spreading method you would like to use, then follow the links which provide information on the components of the system which are needed to prepare the effluent for spreading by the method chosen.

When you have decided on the type of system which may suit your dairy, read Guideline Number 4, "Choosing an Effluent Management System" for details on regulations, environmental factors, and fundamentals of the different systems before you make your final decision.



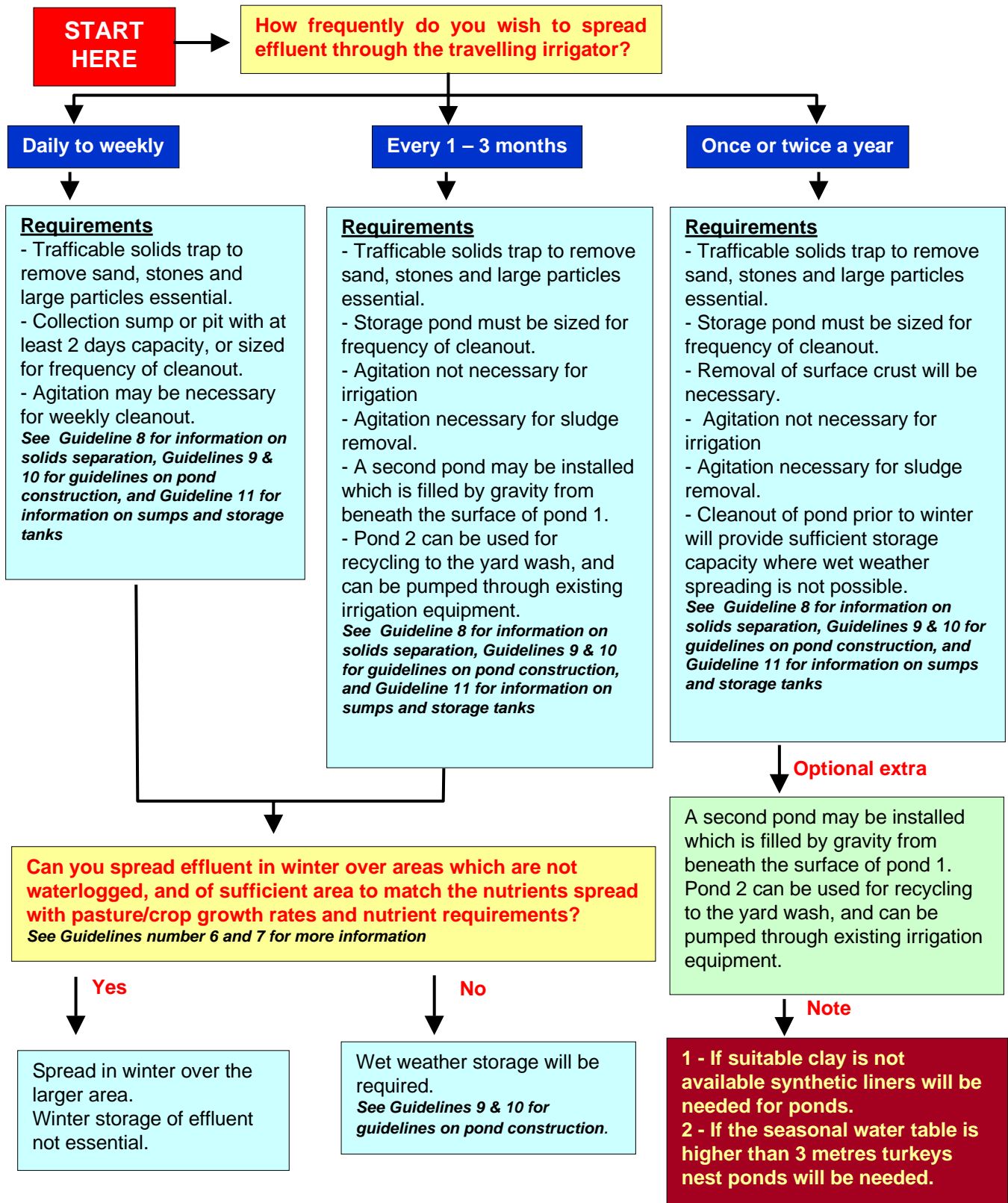
# SLURRY TANKERS

Use this page to obtain an outline of a system for collection and treatment of effluent for spreading with slurry tankers



# TRAVELLING IRRIGATOR

Use this page to obtain an outline of a system for collection and treatment of effluent for spreading with travelling irrigators.



# FIXED SPRINKLERS, LATERAL MOVE AND CENTRE PIVOT IRRIGATORS

Use this page to obtain an outline of a system for collection and treatment of effluent for spreading with fixed sprinklers, lateral move and centre pivot irrigation systems.

**START  
HERE**

**Separation of solids which are larger than the smallest sprinkler nozzle is essential.  
The use of mechanical separators, or gravity separation systems are both suitable.**

## **Mechanical Separation Requirements**

- Trap to remove sand and stones essential.
- Collection sump or pit with at least 2 days capacity.
- Agitation of effluent before separation advisable.
- A short term storage tank or small pond for separated liquid essential.
- Separated effluent can be pumped from storage tank/small pond to irrigation system, or wet weather storage pond when required.

*See Guideline 8 for information on solids separation, Guidelines 9 & 10 for guidelines on pond construction, and Guideline 11 for information on sumps and storage tanks*

**Optional extra**

The storage tank for separated liquid can be fitted with a draw off at 1 metre depth and be recycled to yard wash, the sediment can be returned to the collection pit for further processing.

## **Gravity System – Solids Pond Requirements**

- Trap to remove sand and stones recommended.
- Solids pond must be sized for frequency of cleanout, usually 1 – 2 times per year.
- Removal of surface crust will be necessary.
- Agitation will be necessary at cleanout.
- A second pond which is filled by gravity from beneath the surface of pond 1 is essential.
- Pond 2 should be sized to provide wet weather storage capacity.
- Pond 2 can be used for recycling to the yard wash, and can be pumped through existing irrigation equipment.
- Cleanout of both ponds prior to winter will provide sufficient storage capacity where wet weather spreading is not possible.
- Note: If suitable clay is not available synthetic liners will be needed for ponds.
- If the seasonal water table is higher than 3 metres turkeys nest ponds will be needed.

*See Guideline 8 for information on solids separation, Guidelines 9 & 10 for guidelines on pond construction, and Guideline 11 for information on sumps and storage tanks*

**Can you spread effluent in winter over areas which are not waterlogged, and of sufficient area to match the nutrients spread with pasture/crop growth rates and nutrient requirements?**

*See Guidelines number 6 and 7 for more information*

**Yes**

Spread in winter over the larger area.  
Winter storage of effluent not essential.

**No**

Wet weather storage will be required.  
*See Guidelines 9 & 10 for guidelines on pond construction.*